



CONNECTED LYFESM

DIGITAL TV USER GUIDE

May 2010

Welcome to Connected Lyfe!

Connected Lyfe offers you and your family plenty of channel options and puts you in control of what you watch and when. With features such as parental control, DVR, and reminders, you can take control of your television entertainment experience!

This user guide is intended to help you learn how to navigate and set up your new service. Key features are described in sections that are designed to improve your TV viewing experience.

This document will be updated often as new services become available from Connected Lyfe. If you ever have any questions, please contact customer service.

Customer Care

By phone: 877.FOR.LYFE (877.367.5933)

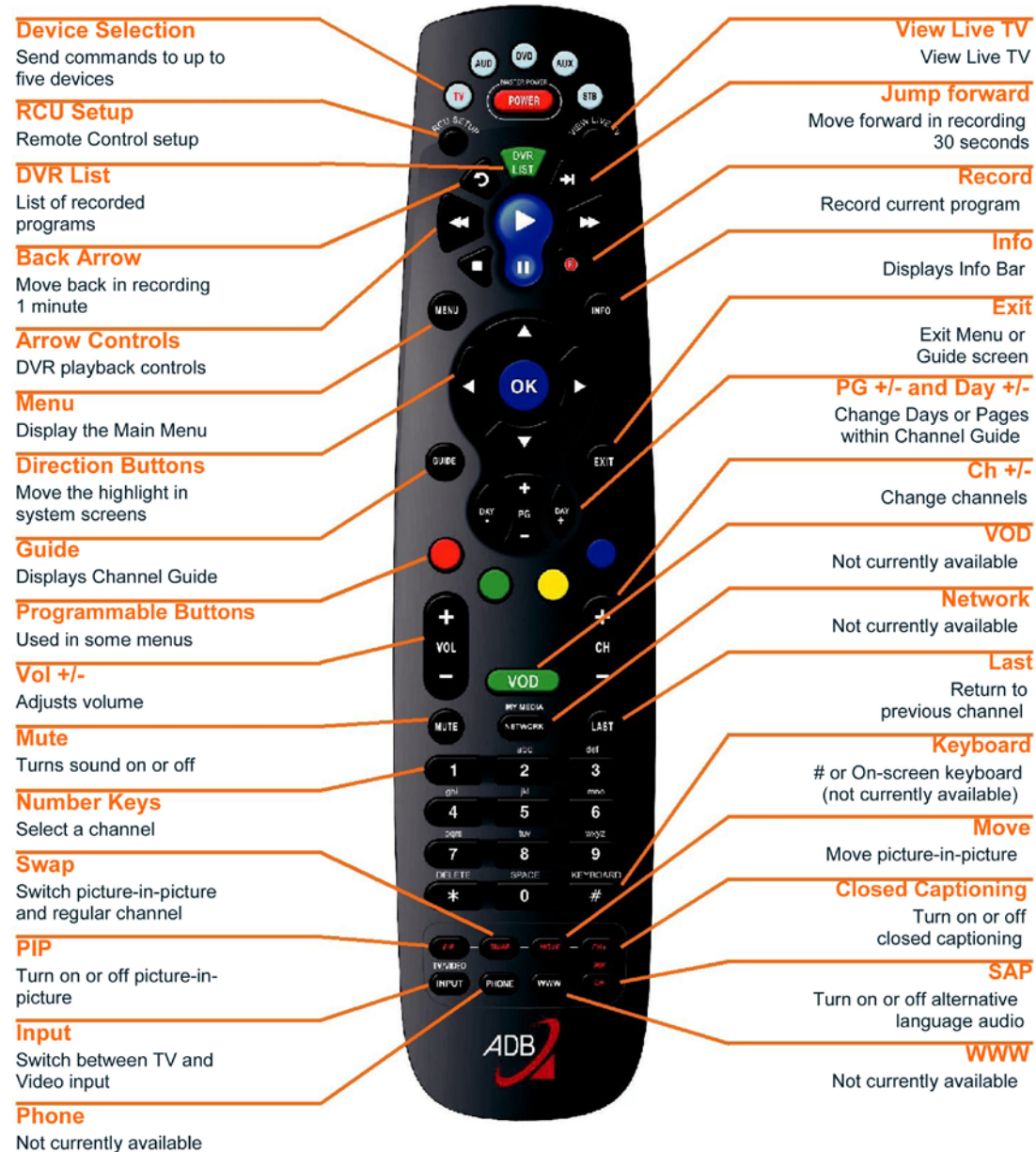
By email: customercare@connectedlyfe.com

By post: Connected Lyfe
c/o Customer Care
P.O. Box 951026
South Jordan, UT 84095

DIGITAL TV USER GUIDE	1
Welcome to Connected Lyfe!	2
REMOTE CONTROL FUNCTIONS	5
Turn Your Set Top Box or TV On or Off	6
Change Channels.....	6
Adjust Volume.....	6
System Buttons	6
Programming Your Remote Control.....	6
Program by Brand:	7
Using Learning:.....	8
Using the Master Power Key:.....	8
The Program Info Bar	10
The Master Menu Bar	11
Menu Bar Functions.....	11
Info Area	12
Program Listings.....	12
Listing Date/Time.....	12
On Screen Program Guide	12
HDTV Programming	12
Schedule Events	13
Set a Reminder, Autotune, or Recording	13
Set a Multi-Reminder, Multi-Autotune, or Multi-Recording	13
Cancel a Reminder, Autotune, or Recording.....	14
DVR	15
Quick Record with DVR	15
Pause Live TV (PLT).....	16
DVR Playback Controller	16
The DVR Menu Quick Reference	16
Access to DVR Recordings.....	16
How to Watch a DVR-Recorded Program	17
Lock or Unlock a Recording.....	17
Deleting a Recording.....	17
Review Recording Events	18
Go to Scheduled Event.....	18
Schedule a Recording, Reminder, or Autotune.....	18
Go to Delete History.....	19

Reminders.....	19
Cancel a Reminder of Autotune.....	19
Parental Controls.....	19
Disable Parental Controls.....	20
Enable Parental Controls.....	20
Channel Blocking.....	20
Channel Blocking Edit.....	21
TV Rating.....	23
Block Unrated.....	23
Show Blocked Program Info.....	23
Content Rating.....	23
Favorites.....	24
Favorites from the Menu Bar.....	24
Create or Edit a Favorites List.....	24
Add or Remove a Single Channel to Favorites While Watching TV.....	25
Search.....	25
Search for a Program.....	25
TV Parental Guidelines Ratings System.....	27
Content Ratings.....	27
CONTACT CUSTOMER CARE.....	28

REMOTE CONTROL FUNCTIONS



Turn Your Set Top Box or TV On or Off

The device selection buttons tell your remote whether you want to control your set top box, television or other device. To turn your set top box on or off, press the **STB** button then press the **POWER** button on your remote control. To turn your TV on or off, press the **TV** button. Press the **POWER** button on your remote control.

Note: Your remote control must have the remote code programmed before it can send the correct signals for your TV.

If pressing **POWER** turned the wrong device on or off, press the **POWER** button again, then press the appropriate device selection button (**STB** or **TV**) and press **POWER** once more.

Change Channels

The **CH +/-** button will change channels up or down, one at a time.

The **PG +/-** buttons will scroll to the next page of channels.

The **Number Keys** can be used to directly enter a channel number.

The **LAST** button will return you to the previous channel you were watching. **GUIDE** will display the program guide.

Adjust Volume

The **VOL+/-** button will adjust the volume gradually.

The **MUTE** button will toggle the sound on and off.

System Buttons

There are a number of buttons on your remote that display different features of your service.

MENU displays the *Menu Bar*. The *Menu Bar* provides quick access to every feature supported by your service.

INFO displays the *Info Bar*, a feature that shows program information, what is coming on next, and what is on other channels.

EXIT causes your set top box to exit whatever screen you are viewing and return you to normal TV viewing. If you ever get lost viewing a screen, it is always safe to press **EXIT** and then start over.

Programming Your Remote Control

Your remote control can handle several devices. However, first you have to set up your remote control for your equipment. You can do it in one of the following ways:

Program by Brand:

First, find the manufacturer of your equipment on the *Brand Codes* list. If the manufacturer's brand is not listed, go to *Automatic Search* "below".

To set up your remote control follow these steps:

1. Turn the device on.
2. Press **TV/AUD/DVD/AUX/STB** depending on what mode you want to program and then press and hold **RCU SETUP** until the device button blinks twice.
3. Enter one of the codes from the list. If the code is correct the mode key blinks twice. If not, the key emits one long blink; you will have to repeat steps 2 and 3 until the correct code is entered.
4. Press **POWER**. If the device has turned off, you have chosen the right code. If none of the codes work, try *Automatic Search*.

Automatic Search: *Automatic Search* should only be undertaken if none of the brand codes works or your brand name is not listed. Use *Automatic Search*, option

1. Switch on the device, and then press the appropriate button; for example "TV" if you want to set up a TV.
2. Press and hold **RCU SETUP** until the mode key blinks twice.
3. Press **991**. The mode key blinks twice.
4. Aim the remote at the device and press **POWER**.
5. Press **CH +/-** repeatedly until the device is switched off.

Note: If any of these items were missing, please contact Connected Lyfe's Customer Care at 877-367-5933.

6. Press **POWER** to turn the TV on.
7. Press **RCU SETUP** to store the code for your device. The mode key blinks twice. Your remote control is now programmed to operate your TV set.
8. To search codes for other devices repeat steps 1 through 7, but substitute the "TV" key with the appropriate one for the mode you are searching for.

Finding your code: If you want to know what code operates your device, you can obtain it with the *Device Code* option. To find the code, follow these instructions:

1. Switch on your device and then press appropriate mode key, for example **TV** if you want to set up the TV.
2. Press and hold **RCU SETUP** until the mode key blinks twice.
3. Press "990". The mode key blinks twice.
4. For the first digit of your code, press "1" and count the number of times the key blinks (e.g. 2 blinks = 2). If the light does not blink, the digit is "0". For the second digit press "2" and count the number of blinks. Do the same for the remaining digits.

5. To check for other device codes, repeat the above steps, but substitute the “TV” key with the appropriate one for the device you are checking.

Using Learning:

Your remote control includes a learning feature. Learning allows you to transfer some unique functions from the remote control of another device to this remote control.

1. Press **RCU SETUP** until the last selected mode key blinks twice. Then press **975**.
2. Press the *mode* key. For example, to transfer a function from your DVD remote control, press “*DVD*”.
3. Press the key on which the function will be stored.
4. Place your remote control and the device remote control (e.g. your DVD remote control) head-to-head, about 2 inches/5 centimeters apart. On the device remote, press and hold the key to be *learned*. The target remote control will blink rapidly and turn off. Keep holding the key on the device remote control until the device key on the target remote control blinks twice.
5. If the *learning* failed, the device key emits one long blink. You will have to repeat step 5.

Deleting a Single Learning Key:

Once you use a particular key to store a function, you may restore the original function of the key.

1. Press the **RCU SETUP** until the last selected mode key blinks twice. Then press **976**.
2. Press the mode key (for example “*DVD*”). The mode key blinks twice.
3. Press the key containing the learned function. The mode key blinks twice.
4. Press and hold the **RCU SETUP** to exit programming.

Deleting All Learned Keys:

1. Press **RCU SETUP** until the last selected mode key blinks twice. Then press **976**.
2. Press the mode key twice (for example “*DVD*”). All the learned keys for this mode will be cleared. The mode key will blink twice.
3. Press and hold **RCU SETUP** to exit programming.

Using the Master Power Key:

Your remote has a feature that enables you to sequentially turn up to five devices on and off with a single key press. This functionality works only if the remote control is in STB mode.

1. Press the **RCU SETUP** until the last selected mode key blinks twice.
2. Press **995**. The last selected mode key will blink twice.
3. Press **POWER**.
4. Press the mode key for the device you would like to turn on first and then press **POWER**. Press the mode key for the second device to turn on and once again **POWER**. Repeat the steps until adding all the devices you want to be operated.
5. To save settings press **STB**.

6. Next press **RCU SETUP** until the **STB** light blinks twice to exit programming.

Volume Lock: The remote control enables you to control the volume level of different devices without selecting the mode key for each device. For example: if you are watching a movie with your DVD player, you can adjust the volume for your TV set, without pressing the TV mode button on your remote control.

To set the Volume Lock for your TV:

1. Press and hold **RCU SETUP** until the last selected mode key blinks twice.
2. Press **993**. The last selected mode key will blink twice.
3. Press **TV** and the device key blinks twice.

Deleting “Volume Lock” for a particular device (example for DVD):

1. Press **DVD** once
2. Press and hold the **RCU SETUP** button until the mode key blinks twice.
3. Press **993**. The mode key blinks twice.
4. Press the **VOL-** key and the mode key will blink four times.

Now being in DVD mode, you will be able to control **VOL+/-** or **MUTE** functions of your DVD only (provided it has volume control).

Deleting “Volume Lock” for all devices:

1. Press and hold **RCU SETUP** until the last selected mode key blinks twice.
2. Press **993**.
3. Press the **VOL+** key and the last selected mode key will blink four times.

Clearing Custom Programming:

You may clear the custom programming and revert to the default settings of the remote control.

1. Press **RCU SETUP** until the last selected mode key blinks twice.
2. Enter **980**. The last selected mode key blinks twice, pauses, and blinks twice again.

This procedure does not affect your setup codes; they remain in the memory of the remote control.

The Program Info Bar

The *Info Bar* is a quick way to find information about the show you're watching, as well as what will be showing later or on other channels.

There are a few other ways to make the basic *Info Bar* appear: press **INFO** on your remote control or press the *up* or *down* buttons. The basic *Info Bar* will also appear any time you change channels. Once the *Info Bar* is active, press **INFO** again to display the detailed *Info Bar*. The detailed *Info Bar* includes information on actors, directors and what is broadcasting later.

Press the *up* or *down* direction buttons to scroll through what is broadcasting on other channels without changing channels. To watch another channel, press **OK** on the appropriate *Info Bar* screen to tune to that channel.

The *Info Bar* will disappear after a few seconds of inactivity, or press **EXIT** on your remote control. If you are in the detailed *Info Bar*, you can press **INFO** once more to exit.



Press the *right* direction button to scroll ahead to upcoming programs for the channel listed on the *Info Bar*. Press the direction button to scroll back towards the current program for the channel listed on the *Info Bar*.

Note: You can combine these steps to see what is broadcasting later on another channel, however, browsing for programs on other channels or at different times is easier in the Guide.

Press **OK** to display options to set a reminder, autotune or recording (if your set top box supports PVR).



The Master Menu Bar

The *Menu Bar* is a quick and easy way to access any feature of your service. To display the *Menu Bar*, press **MENU** on your remote control.

Note: Parental controls must first be set up in settings before parental controls on/off button will appear on the Menu Bar.

Menu Bar Functions

Guide will show the program guide.

PVR provides access to programs recorded using *PVR*, as well as reviewing recordings you have scheduled, creating a scheduled recording event, reviewing the history of what you have recorded recently, or deleting your recording history.

Parental Controls allows you to temporarily disable or enable all parental controls.

Note: Parental controls will not appear until you have created parental control settings.

Settings offers access to creating parental controls and setting blocked channels, determining how things appear on screen, and creating, editing and deleting user accounts.

Favorites allow you to choose, edit, create or delete a favorite channel list.

Search allows you to search program listings or Video on Demand rentals by title.

Sign Out allows you to sign out of the current user account. This only appears if you are using the *enable login* option under *settings/preferences*, have multiple *user accounts*, and have signed in with a *user name* and *password*.

Favorite List indicates the favorite list currently in use. When you switch users, *Guide's* channel lineup will change to reflect that user's preferences.

*Note: ALL indicates all channels available through Connected Lyfe. Pressing the **GUIDE** button again, you will see *Subscribed*, which will display only those channels currently subscribed to.*

Press the **GUIDE** button again and you will see *favorites*.

Picture-in-Picture

Allows you to watch TV while you are in *Guide*.



Info Area

Provides information about the currently highlighted program, including start/end times and rating/description. It also displays the current time and icons indicating closed captions, Dolby® Digital audio, etc.

Highlight

Indicates what program listing is currently in being viewed.

Program Listings

Shows *channel number*, *abbreviation* and *program listings* for each channel. Program listings may include icons to indicate a setting or feature for a particular program.

Listing Date/Time

Shows the date and time (divided into 30-minute increments) for the programs currently shown in *Guide*.

On Screen Program Guide

Guide is the place to quickly find out what is currently broadcasting as well as what is broadcasting later. You can set *reminders* or *recordings* for upcoming programs in *Guide*.

To locate the *Guide*, press **GUIDE** or **MENU**; highlight *Guide*, and press **OK**.

To navigate *Guide*, press the direction buttons to move the *highlight*. Jump to a channel by entering the channel with the Number Pad (0-9).

Press **OK** to choose the program you have highlighted. If the program is currently broadcasting, *Guide* will tune you to the channel. Press **OK** or **EXIT** to leave the *Guide*.

If the program broadcasts later, you can set a *reminder*, *autotune* or *recording* (if your set top box supports *DVR*). These are known as *scheduled events*.

HDTV Programming

Programs available in Hi-Def will appear in *Guide* with a bright *green HD* icon next to the name of the program. In order to watch Hi-Def programming, you will need a Hi-Def-capable set top box and television, and may need to subscribe to a Hi-Def channel package. Please contact your service provider for more information.



Schedule Events

Scheduled Event is the name for any setting you create that causes the system to remind you about a program or record a program automatically. There are three types of *scheduled events*: *reminders*, *autotunes* and *recordings*.

A *reminder* tells the system you want it to let you know a program is about to begin. An *autotune* will automatically change to the correct channel when the program is about to start. A *recording* will automatically record the program using *PVR*.

Note: Your set top box must support PVR to use the record function.

Set a Reminder, Autotune, or Recording

1. Pick a Program

Find the program you want to watch. Highlight the program listing and press **OK**. Note: If you are setting a *recording*, you can highlight the program listing and press **RECORD** instead of **OK**, then skip steps 2 and 3.

2. Set the Reminder, Autotune or Record

3. Return to Guide

Highlight *set recording*, *set reminder*, *set autotune* or *record series* and press **OK**. You will then be returned to *Guide*.

4a. Your Reminder

A few minutes before your program starts, a box will appear on your screen telling you that you have a reminder. Press **INFO** to display the reminder. Highlight the button showing the program name and press **OK** to switch to that program, or highlight *cancel* and press **OK** to ignore the reminder.

4b. Your Auto Tune

Just before the program begins, a message will display giving you the option to tune in or cancel. You may choose either option or wait a moment and the message will disappear. At this time, the system will tune to the correct channel.

4c. Your Recording

Once your program begins, your set top box will begin recording it for you. When you are ready to watch your recording, you will need to go to the *Vault*.

Set a Multi-Reminder, Multi-Autotune, or Multi-Recording

A scheduled event that repeats is *multi-event*. For example, if you watch a certain program every weeknight at 8:00 PM and want to be reminded each time it comes on, create a *multi-reminder*.

1. Pick a Program

Find the program you want to watch. Highlight the program listing and press **OK**.

2. Set the Recording

Highlight and press **OK**. The *schedule events* screen lists all the information about the start and end times, date and the correct channel for your program. If anything is not correct, highlight the incorrect item and press **OK**; use the *up* and *down* direction buttons to enter the correct information and press **OK**.

3. Set the Event Type

Highlight the box next to *type:* and press **OK**. The highlight will become *up* and *down* arrows. Press the *up* and *down* direction buttons until you see the event type you want (*recording, autotune, reminder*), then press **OK**.

4. Set Event Frequency

Highlight the box next to *freq:* and press **OK**. The highlight will become *up* and *down* arrows. Press the *up* and *down* direction buttons until you see the frequency you want (*single, M-F, weekly*), then press **OK**.

5. Return to Guide

Once you have set the *event frequency*, highlight **OK** on the *schedule event* screen and press **OK**. You will be re-turned to *Guide*. The program listing now shows an icon next to the program's name

Cancel a Reminder, Autotune, or Recording

You may cancel any scheduled event you have previously set directly from *Guide*.

1. Pick the Program

Highlight the program with the scheduled event you want to cancel and press **OK**.

2. Cancel the Scheduled Event

Depending on the type of event you are canceling, your option will be cancel series, skip episode, etc. Highlight the option you want, press **OK**, and then confirm cancellation.

3. Return to Guide

After you press **OK**, you will return to the *Guide*. The program listing will no longer display the *event* icon.

Guide and Favorite Lists

While in *Guide*, you can cycle through your *Favorites* lists by pressing *Guide* repeatedly. Each time you press the **GUIDE** button, it will activate the next *Favorites* list. The name of the active *Favorites* list is shown on the *green tab* in the *picture-in-picture* area. This causes *Guide* to only display the channels included on that *Favorites* list. Pressing **GUIDE** once you have cycled through all *Favorites* lists will exit *Guide*.

DVR

DVR, or *Digital Video Recording*, allows you to record programs digitally without the need for tapes or discs, as well as *pause* live TV.

Note: If your set top box does not support DVR, please contact Connected Lyfe for an upgrade.



Quick Record with DVR

The fastest and easiest way to begin recording using *DVR* is to press the **RECORD** button on your remote control.

Start Recording

While watching a program, press **RECORD**. Your set top box will immediately begin recording, and the *Info Bar* will appear with a red *record* icon to the right. Once recording has started, a *DVR* icon will replace the *Record* icon on the *Info Bar*, indicating you are now watching a program recorded to *DVR* (even though it may still be recording). You can also start a quick record in *Guide*. Highlight a program you want to record using the *direction* buttons and press **RECORD**. If the program is currently on, recording will begin immediately. If the program comes on in the future, a recording event is scheduled and your set top box will record the program for you automatically. Your TV can even be turned off and recording will take place (your set top box must stay on).

Pause Live TV (PLT)

DVR also allows you to *pause* live TV (PLT), meaning a program that you are already watching. This will allow you to walk away from your TV and then return without missing anything. You can fast forward from the point where you paused to the point where you catch up with the live TV. If you change channels, the temporary storage will be cleared and start to temporarily store the content for the new channel. The *PLT playback controller* appears whenever you *pause*, *rewind* or *fast-forward* live TV. The center area displays a *green bar* to indicate the amount of TV you can rewind or fast forward through. The *green arrows* show where you are within that range. The far left box indicates the current playback function (pause, play, etc.). The far right box indicates the current time.

Controlling DVR and Live TV

While watching a recorded program or live TV, you can use the *Playback Control* buttons to *pause*, *rewind*, *fast forward* or *stop* playback. Press *pause* to halt playback at the current point. Press *rewind* or *fast forward* to reverse or advance playback from the current point. Each time you press *Rewind*, the rewind speed accelerates from 4x - 15x - 60x - 300x. Press *play* to resume watching at normal speed. Press *stop* to exit playback of the program.

DVR Playback Controller

Any time you press one of the *playback control* buttons while watching a recorded program, the *DVR playback controller* is displayed. The box to the *left* indicates the *playback function* in use. The bar in the middle gives a visual representation of where you are in the recording. The lighter section indicates how much of the recording has been played.

Go to DVR, press **MENU**, highlight DVR and press **OK**.

The DVR Menu Quick Reference

Recordings

Lists programs you have already recorded. Go here to watch, lock or delete these recorded programs.

To Record

Lists all *recording events* you have scheduled, and allows you to cancel any future recording events.

Schedule Event

Allows you to create a *recording*, *reminder* or *autotune* event for individual or recurring programs.

Record History

Is a log of when recordings start, complete or are cancelled.

Access to DVR Recordings

Highlight *recordings* and press **OK**. A list of your recorded programs will appear to the right. *Recordings* are listed from newest at the top to oldest at the bottom. Along with the program name, the length of the recording in minutes and the date the recording is made are listed. Any program still being recorded is listed with a red dot icon to the right of the recording date.

How to Watch a DVR-Recorded Program

1. Pick a Recording

Highlight the recording you want to watch and press **OK**.

2. Play the Recording

Highlight and press **OK**.

3. Watch the Recording

Exit the *DVR* menu and your recording will start playing. The *Info Bar* will appear for a few seconds with a *green DVR* icon to the right to indicate you are playing a *DVR* recording. While watching your recording, you can use any of the *DVR Control* buttons on your remote just as you would if watching a videotape or DVD.

4. Return to Live TV

When the recording ends, you will be returned to live TV. If you want to return to live TV before your recording has ended, press **STOP**, then **LAST**.

Lock or Unlock a Recording

Locking a recording prevents the system from deleting a program to make space for new recordings.

Note: You can still manually delete a locked recording. Locking only prevents the system from automatically deleting it. When manually deleting a locked program, you will be asked to confirm the deletion.

1. Pick a Recording

Highlight the recording you want to lock and press **OK**.

2a. Lock the Recording

Highlight and press **OK**. Once a program is locked, it appears to the right of the recording date.

2b. Unlock the Recording

If you select a locked program in Step 1, the *Lock* option will instead be *Unlock*. Highlight and press **OK**. When the program is unlocked, the *padlock* icon is removed.

Deleting a Recording

1. Pick a Recording

Highlight the recording you want to delete and press **OK**.

2. Delete the Recording

Highlight and press **OK**.

3. Confirm Delete

Highlight *Yes* or *No*, then **OK**.

4. Recording Deleted

Once you confirm the deletion, the entry for that recording is removed from the list. Note: Once a recording has been deleted, there is no way to get it back. Please take care when deleting recordings.

Review Recording Events

You can easily review and cancel future recording events from *to record*.

Go to a Recording Event

Highlight *To Record* and press **OK**. A list of your scheduled future recording events will appear to the right. Recording events are listed from newest at the top to oldest at the bottom. Each recording event history lists the channel on which the program is shown, the name of the program, and the date and time it airs. If the recording event is a multi-recording, stacked red dot icons are shown to the right of the program date and time.

Schedule a Recording (or other) Event

You can schedule a *recording*, *reminder* or *autotune* event from the PVR menu in almost exactly the same way as you would when choosing *schedule event* from *Guide*. The only difference when doing so from the PVR menu is that no information about the event is entered for you.

Go to Scheduled Event

Highlight *schedule event* and press **OK**.

Schedule a Recording, Reminder, or Autotune

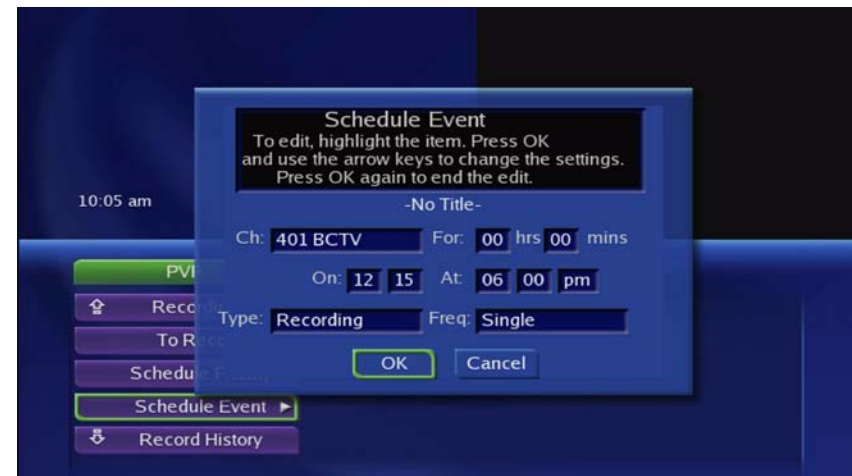
Once you choose *schedule event* from the PVR menu, the *schedule event* window appears. Highlight the setting you want to change and press **OK**. Use the *up* or *down* direction buttons to change the setting. Press **OK** to enter your change.

Recording History

Record history is a log of all events related to your recordings, including recording started, recording completed and cancellation of a recording event. *Delete history* is a log of all recordings that have been deleted.

Go to Record History

Highlight *Record History* and press **OK**.



Review Record History

Press the *up* and *down* direction buttons on the remote to scroll through your record history.

Go to Delete History

Highlight *delete history* and press **OK**.

Reminders

Reminders list all *reminder* and *autotune* events you have created. From here you can cancel a reminder or *autotune*.

Go to Reminders

Press **MENU**, highlight *PVR*, then highlight your choice; press **OK**. Highlight *reminders* and press **OK**. A list of your *reminders* and *autotunes* appears to the right.

Cancel a Reminder of Autotune

1. Pick the Program: Highlight the *reminder* or *autotune* you want to cancel and press **OK**.
2. Cancel the autotune or reminder: Highlight *cancel autotune* or *cancel reminder* depending on the type of event you are canceling and press **OK**.



Parental Controls

Note: Parental Controls must first be set up in Settings before the Parental Controls on/off button will appear on the Menu Bar.

Parental controls lets you turn on and off all parental controls for your service. With *parental controls* on, you can let the kids watch TV without worrying they may see something inappropriate. With *parental controls* off, adults can watch their programs without repeatedly entering a password.

When parental controls are on, titles and descriptions of programs that exceed your parental control settings will not be shown. Once parental controls are turned off, all program titles will be shown.

Go to Parental Controls

Press **MENU** and highlight *parental controls*.

Disable Parental Controls

Press **OK**. Use the *number pad* to enter your *parental controls* password. Then highlight **OK** and press **OK**. When you disable parental controls, they will remain that way until you turn them back on, or the *parental controls time out* is reached. The time out is the maximum period of time for which *parental controls* will be disabled. At the end of the time period, the system will automatically restore *parental controls*. You will see an alert on the screen just before *parental controls* are restored.

Enable Parental Controls

Press **MENU** and highlight *parental controls*, then press **OK**. *Parental controls* are now in effect.

Settings

Settings gives you control over your video service. You can choose to share rentals, change how alerts appear on your screen, create parental controls, block channels and change the appearance of your screens using *themes*. You can also create user accounts for members of your family.

Go to Settings

Press **MENU** and highlight *settings*. Input password, if applicable. There are two main sections of *settings*: *preferences and users*.

Preferences – settings that affect your overall service. This includes if users are required to log-in, how on-screen alerts are handled, parental controls and blocked channels that apply to everyone.

Channel Blocking

Channel blocking enables or disables the list of channels you have blocked. Programs on blocked channels cannot be watched regardless of the rating of the program(s) being shown. To turn *channel blocking* on or off, highlight the check box and press **OK**. To edit the list of channels that are blocked, highlight the *edit* button and press **OK**.

Parental control turns all parental control settings on or off for all users. To turn parental controls on or off, highlight the check box and press **OK**. Confirm choice by pressing *submit*.

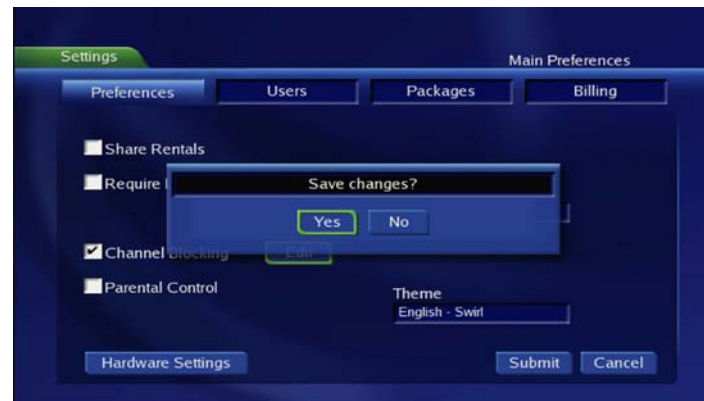
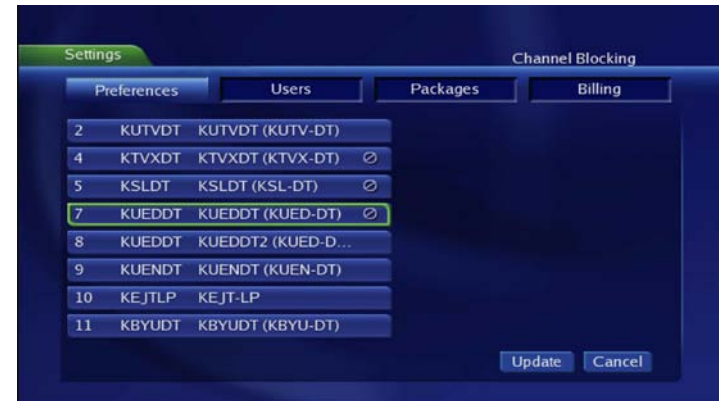
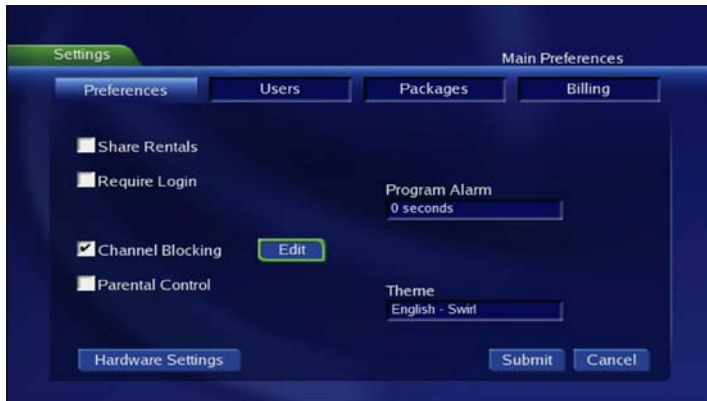
Program Alarm

Program alarm determines how early a reminder will be shown once you set a program reminder.

To set *program alarm*, highlight the option box under program alarm and press **OK**. Then press the *right* or *left* direction button to display 0 seconds, 30 seconds, 2 minutes or 5 minutes, then press **OK**. These settings will cause the reminder to appear the chosen seconds or minutes before the program begins.

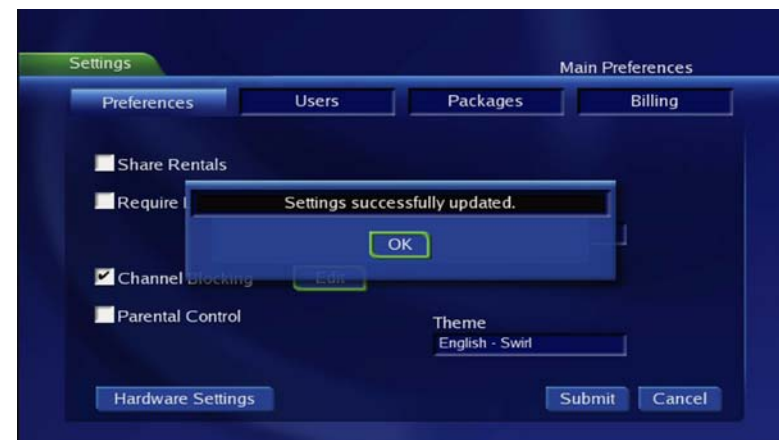
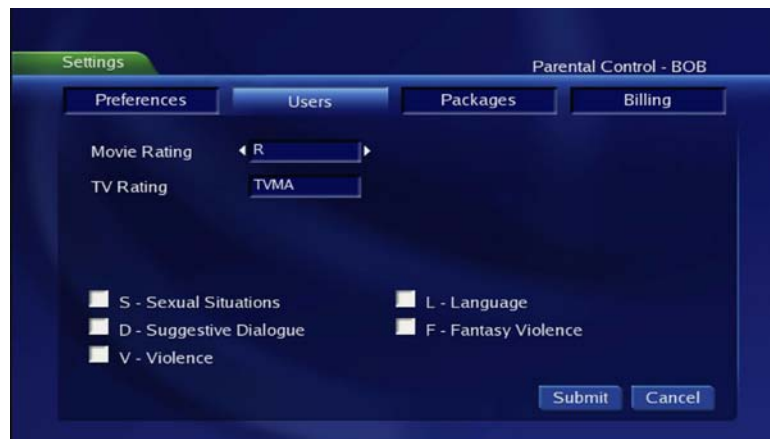
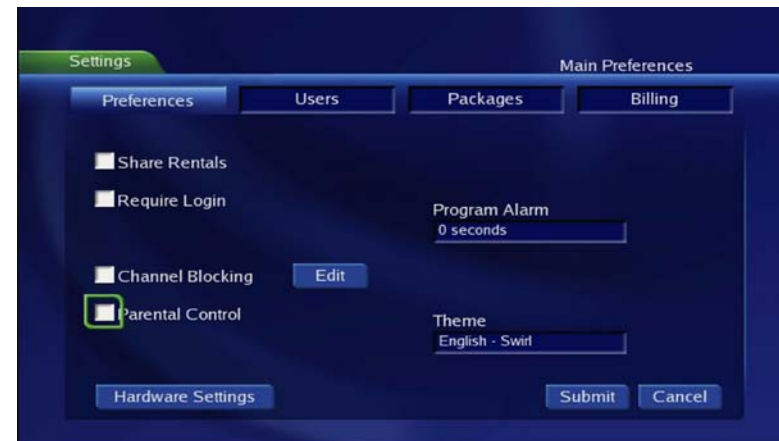
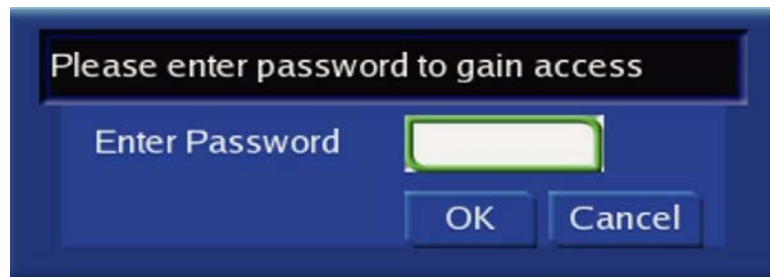
Channel Blocking Edit

Channel blocking edit displays a list of all channels available. You can then block or unblock any channel. To block channels, highlight the *Channel blocking edit* button and press **OK**. The *channel blocking* list will appear. To block/unblock a channel, highlight the *channel entry* and press **OK**. To go to the next screen of channels, press the *up* or *down* direction button. To save your changes and return to the *preferences* screen, highlight *update* and press **OK**.



Parental Control Edit

Parental control edit allows you to set overall parental controls that affect all users. To edit parental controls for all users, highlight the *parental control edit* button and press OK.



Movie Rating

Movie rating determines the highest rating for movies that will not be blocked. To set *movie rating*, highlight the option box next to *movie rating* and press **OK**. Use the *direction* buttons to display G, PG, PG-13, R, NC-17, or AO, and then press **OK**.

TV Rating

TV rating determines the highest rating for television that will not be blocked. To set *TV rating*, highlight the *option* box next to *TV rating* and press **OK**. Use the *direction* buttons to display TV-Y, TV-Y7, TV-G, TV-PG, and TV-14, or TV-MA, then press **OK**.

Block Unrated

Block unrated allows or blocks any program that does not have a rating. To turn *block unrated* on or off, highlight the *check box* and press **OK**.

Show Blocked Program Info

Show blocked program info allows or blocks any information being listed in the *Info Bar* or *Guide* for any program that has been blocked. To turn *show info for blocked programs* on or off, highlight the *check box* and press **OK**.

Content Rating

Content Rating determines the type of content that will be blocked: S - Sexual, L - Language, FV - Fantasy Violence, V - Violence, and D - Dialogue. To block a particular type of content, highlight the *check box* to the right of the item and press **OK**.

Once you have changed any *parental control settings*, highlight *submits* and presses **OK**. To discard your changes, highlight *cancel* and press **OK**. Save your preference settings.

Once you have changed any *preferences* settings, use the *direction* buttons to highlight the *submit* button and press **OK**. If you want to discard your changes, highlight *cancel* and press **OK**.

Save Your Parental Control Settings

Once you have changed *parental control settings*, highlight the *submit* button and press **OK**. If you want to discard your changes, highlight *cancel* and press **OK**.

Favorites

Favorites allow you to create, edit, choose or delete a list of your favorite channels. You can have multiple *favorites* lists depending on how you want to use them.

Press **MENU** and highlight *favorites*, then press **OK**. You will be presented with a screen with options to choose, edit, create or delete a favorites list, or cancel.

Favorites from the Menu Bar

Follow the steps above in “Go to Favorites,” then highlight *Choose* and press **OK**. Then highlight the *favorites* list you want and press **OK**.

Favorites from Guide

While in **GUIDE**, you can cycle through your *favorites* lists by pressing **GUIDE**. Pressing **GUIDE** once you have cycled through all favorites lists will exit *Guide*.

Create or Edit a Favorites List

1. Create or Edit

Follow the steps above in *go to favorites*, highlight *create* or *edit*, and press **OK**.

2. Name Your Favorites List

You will see the *favorites create/edit* screen. This screen displays every channel offered. *Name* box is already highlighted. Press **OK** to use the on-screen keyboard to change the name for your *favorites* list.

First, highlight *clear all* and press **OK** to clear out the default name. Highlight each letter in the new name and press **OK**. Once you have entered the name for this favorites list, highlight *done* and press **OK**.

3. Choose Your Favorite Channels

Highlight a channel to add to or remove from your favorites list and press **OK**. A channel included in the favorites list shows a heart icon to the right of the channel info. To go to the next screen of channel entries, press the *down* direction button. To save your favorites list, highlight the *update* button at the bottom right of your screen and press **OK**. To cancel your *favorite* list without saving it, highlight the *Cancel* button at the bottom right of your screen and press **OK**.



Delete a Favorites List

Select the *favorites list* to delete, highlight the list you want to delete, press **OK**.

Add or Remove a Single Channel to Favorites While Watching TV

1. Pick a Channel

Tune to the channel you want to add or remove from a favorites list and press **OK**.

2. Pick an Action

Highlight *add* (if this channel is not on any favorite list), *remove* (if this channel is on every favorite list), or *add/remove* (if this channel is on some favorite lists and not on others) and press **OK**.

3. Pick a Favorites List

Highlight the *favorites list* to which you want to add or remove the current channel and press **OK**.

Note: You will not be shown any favorite list which already includes this channel if adding, or which does not include this channel if removing.

Add or Remove a Single Channel to Favorites from Other Screens

You can use this same process to add or remove a channel to a *favorites list* from *Guide*, *Vault/VOD*, or *Search*.

Search

Search allows you to enter the name or partial name of a program or video you are looking for and have your service find any program matching the text you enter.

Press **MENU** and highlight *Search*, then press **OK**.

Search for a Program

1. Enter the Program Title

The highlight will be on the *search* text box when the *search* screen appears. Press **OK** and a keyboard will appear to the right of the screen.

Highlight each letter in the name of the program you want to find, and press **OK** on each. Each time you press **OK** you will see that letter added to the text box. If you enter a wrong letter, highlight *del* and press **OK** to go back one space. If you need to start over, highlight *clear all* and press **OK**. Once you have entered as much of the program name as you feel necessary, highlight *done* and press **OK**.

Note: It is best to enter as little as possible when searching. Usually the first 3 or 4 letters in the name will be enough to find what you want.

2. Search

Highlight *search guide* and press **OK** to have the system start searching for all programs that match your search criteria.

3. Pick a Result

You can now highlight any program or rental listing and press **OK** to watch or record a program, set a reminder or autotune. Add or remove the channel to a favorites list.

MPAA (Motion Picture Association of America) Ratings System

G – General Audience

This is a film which contains nothing which would, in the view of the MPAA Rating Board, be offensive to parents whose younger children view the film.

PG – Parental Guidance Suggested

The theme of a PG-rated film may itself call for parental guidance. There may be some profanity in these films. There may be some violence or brief nudity. But these elements are not deemed so intense as to require that parents be strongly cautioned beyond the suggestion of parental guidance. There is no drug use content in a PG-rated film.

PG-13 – Parents Strongly Cautioned

A PG-13 film is one which, in the view of the MPAA Rating Board, leaps beyond the boundaries of the PG rating in theme, violence, nudity, sensuality, language, or other contents, but does not quite fit within the restricted R category. Any drug use content will initially require at least a PG-13 rating.

R – Restricted

An R-rated film may include hard language, or tough violence, or nudity within sensual scenes, or drug abuse or other elements, or a combination of some of the above, so that parents are counseled to take this advisory rating very seriously.

NC-17 – No Children 17 or Under

NC-17 does not necessarily mean “obscene or pornographic” in the often accepted or legal meaning of those words. The MPAA Review Board does not and cannot mark films with those words. These are legal terms and for courts to decide. The reasons for the application of an NC-17 rating can be violence or sex or aberrational behavior or drug abuse or any other elements which, when present, most parents would consider too strong and therefore off limits for viewing by their children.

AO – Adults Only (Game Rating)

Contains content unsuitable for minors. For more information on the MPAA or the MPAA ratings system, please visit www.mpa.org/flmratings.asp.

TV Parental Guidelines Ratings System

The TV Parental Guideline rating provides program and content ratings to provide a clearer idea of the reason for a program's rating.

Program Ratings

TV-Y – All Children

This program is designed to be appropriate for all children.

TV-Y7 – Directed to Older Children

This program is designed for children age 7 and above. It may include mild fantasy violence or comedic violence.

TV-G – General Audience

Most parents would find this program suitable for all ages.

TV-PG – Parental Guidance Suggested

This program contains material that parents may find unsuitable for younger children.

TV-14 – Parents Strongly Cautioned

This program contains some material that many parents would find unsuitable for children under 14 years of age.

TV-MA – TV Mature Audience Only

This program is specifically designed to be viewed by adults and therefore may be unsuitable for children under 17.

Content Ratings

Content Ratings are shown just below the program rating.

FV: Fantasy Violence (only applied to TV-Y7)

V: Violence TV-PG: Moderate; TV-14: Intense; TV-MA: Graphic

S: Sexuality TV-PG: Some; TV-14: Intense; TV-MA: Explicit

L: Language TV- PG: Infrequent; TV-14: Strong; TV-MA: Crude

D: Dialogue TV- PG: Some; TV-14: Intense; TV-MA: Not used

For more information on TV Parental Guidelines

*Monitoring Board and its rating system, please visit
www.tvguidelines.org*

CONTACT CUSTOMER CARE

By phone: 877.FOR.LYFE (877.367.5933)

By email: customercare@connectedlyfe.com

By post: Connected Lyfe
c/o Customer Care
P.O. Box 951026
South Jordan, UT 84095